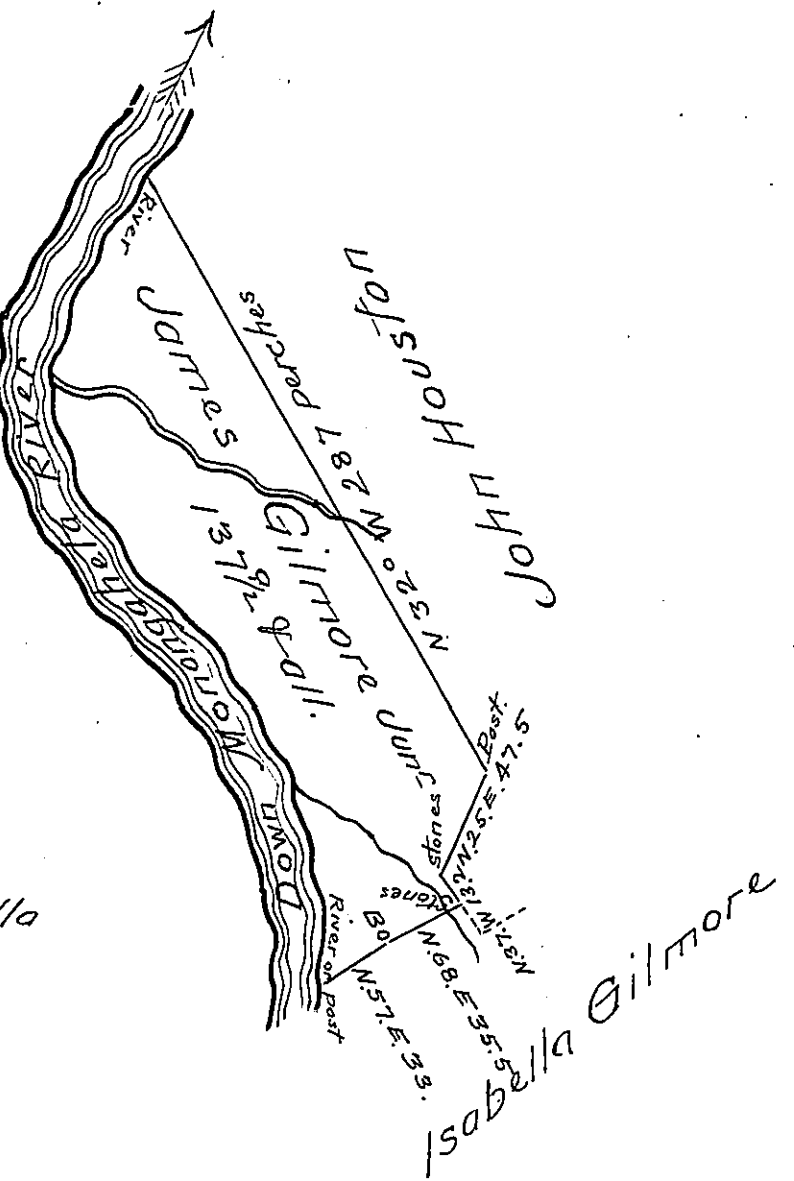


Courses & Distances
up Monongahela River

- S. - 39. - W. - 27.3
- S. 21. W. 48.
- S. 53/4. W. 22.
- S. 183/4. E. 32.5
- S. 383/4. E. 44.
- S. 42. E. 36.6
- S. 33. E. 53.1
- S. 22. E. 34.
- S. 12 1/2 E. 50.
- S. 4 1/4 E. 22 to Isabella
Gilmore's Corner.



Situate on the East side of Monongahela River
in German Township Fayette County and Surveyed
on the 20th day of January 1790 in pursuance of
a Warrant dated the 23^d day of October 1771

Pr. Alexander McLean

Daniel Brodhead Esquire Deputy
Surveyor General

IN TESTIMONY that the above is a copy of the original remaining on file in
the Department of Internal Affairs of Pennsylvania, made
conformably to an Act of Assembly approved the 16th day of
February, 1833, I have hereunto set my Hand and caused
the Seal of said Department to be affixed at Harrisburg,
this Twelfth day of October 1904.

Loac R. Brown
Secretary of Internal Affairs.